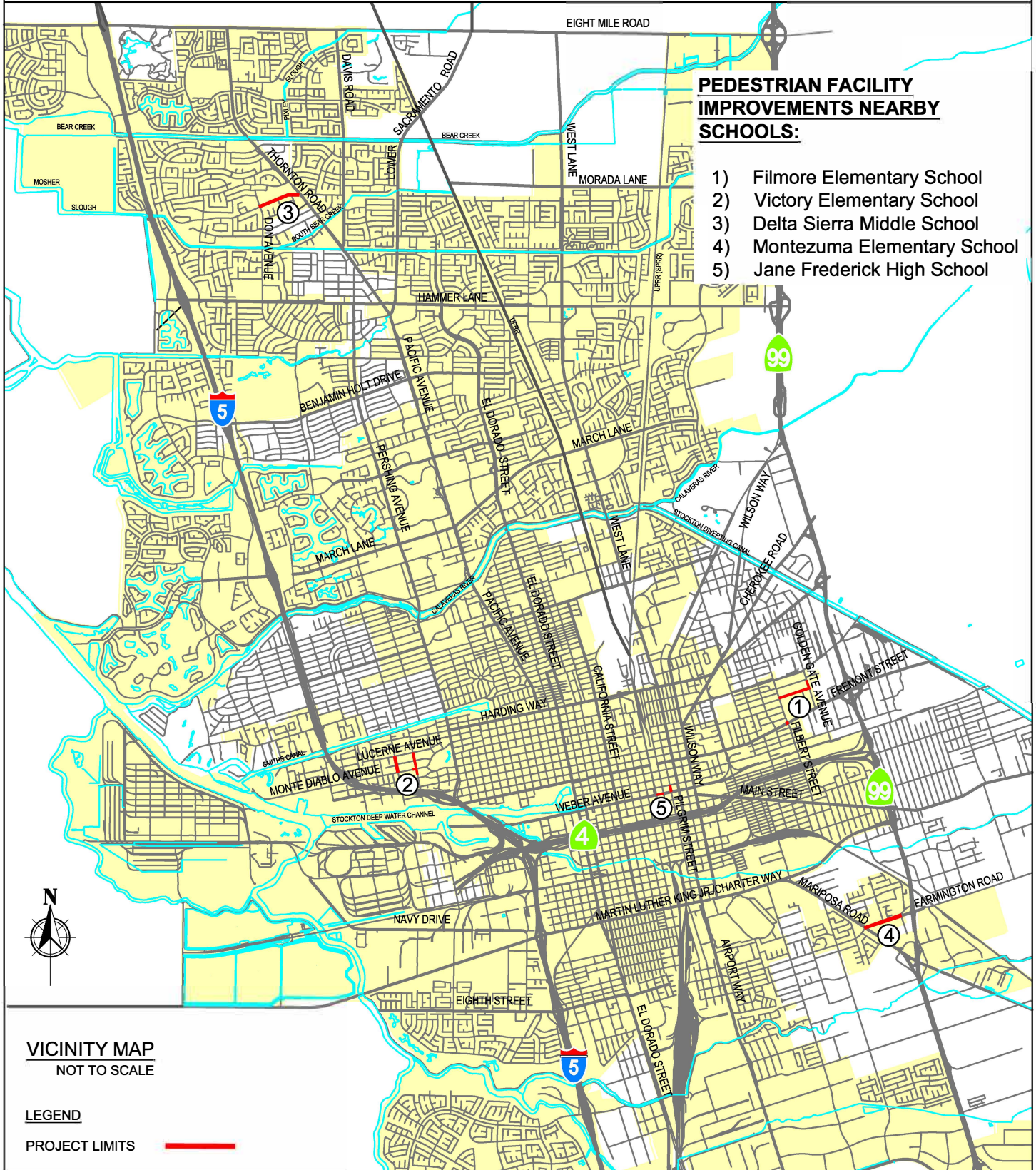


SAFE ROUTE TO SCHOOL SIDEWALK GAP CLOSURE PROJECT (FEDERAL PROJECT NO. ATPSB1L-5008(187)/CITY PROJECT NO. PW1913)

CITY OF STOCKTON
DEPARTMENT OF PUBLIC WORKS



PEDESTRIAN FACILITY IMPROVEMENTS NEARBY SCHOOLS:

- 1) Filmore Elementary School
- 2) Victory Elementary School
- 3) Delta Sierra Middle School
- 4) Montezuma Elementary School
- 5) Jane Frederick High School

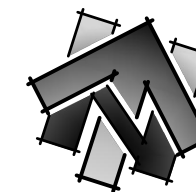
VICINITY MAP
NOT TO SCALE

LEGEND

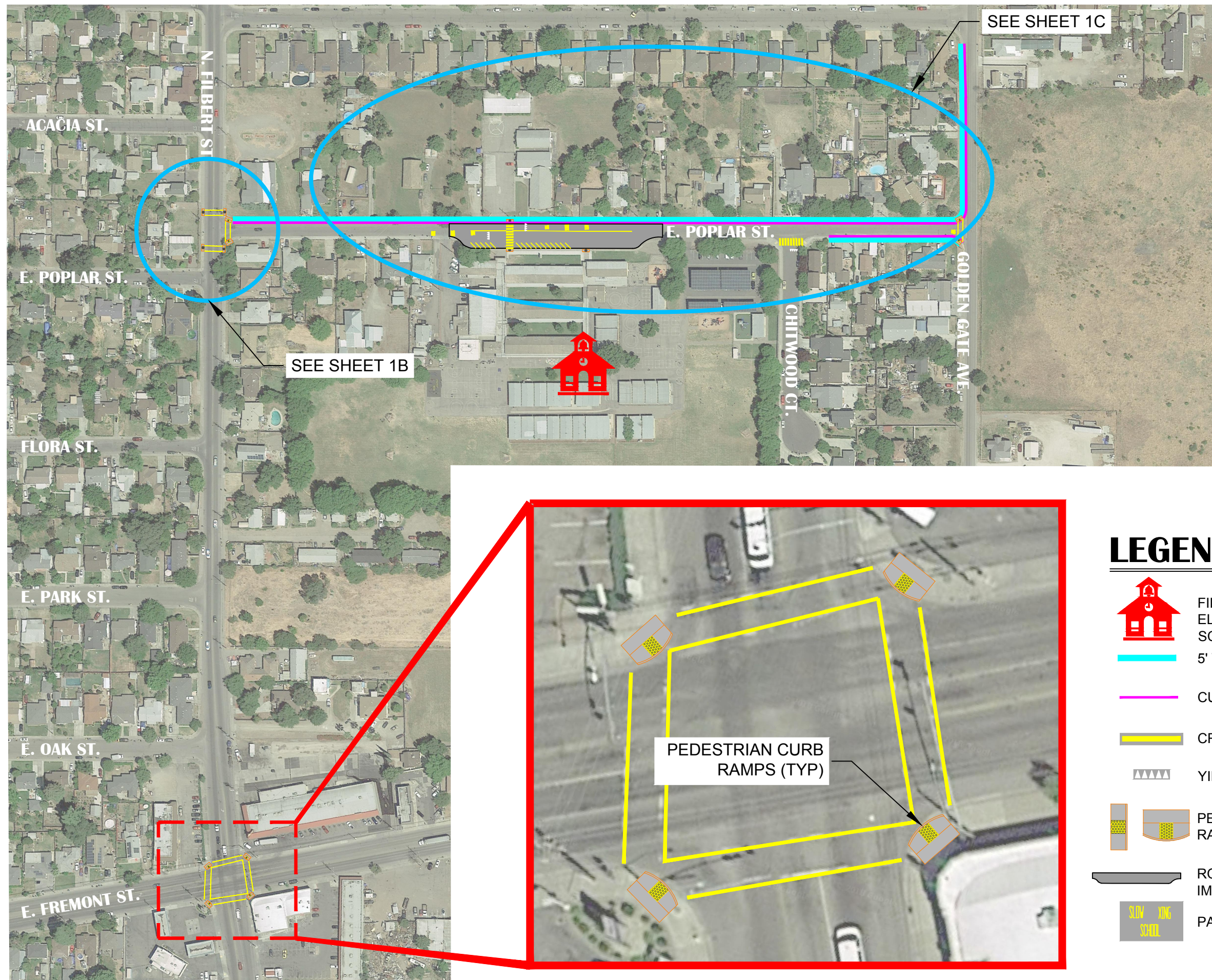
PROJECT LIMITS —

FILLMORE ELEMENTARY SCHOOL - IMPROVEMENTS OVERVIEW

ATTACHMENT



PLAN SCALE: 1"=200'
DETAIL SCALE: 1"=30'

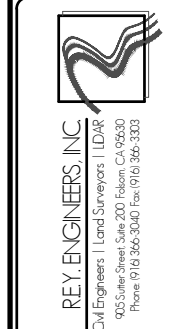


LEGEND

- FILLMORE ELEMENTARY SCHOOL
- 5' WIDE SIDEWALK
- CURB & GUTTER
- CROSSWALK MARKINGS
- YIELD MARKINGS
- PEDESTRIAN CURB RAMP
- ROADWAY IMPROVEMENT LIMIT
- PAVEMENT MARKINGS

NO.	REVISION DESCRIPTION	CHECKED BY	DATE

DRAWING SCALE
HOR. SCALE:
VERT. SCALE:



SRTS: SIDEWALK GAP CLOSURE
FILLMORE ELEMENTARY SCHOOL
ATTACHMENT D

CITY OF STOCKTON
CALIFORNIA

DRAWING INFO	
DATE:	7-30-18
DRAFTER:	
DESIGNER:	
REVIEWER:	

PROJECT NO.	1533.003
SHEET NO.	1A

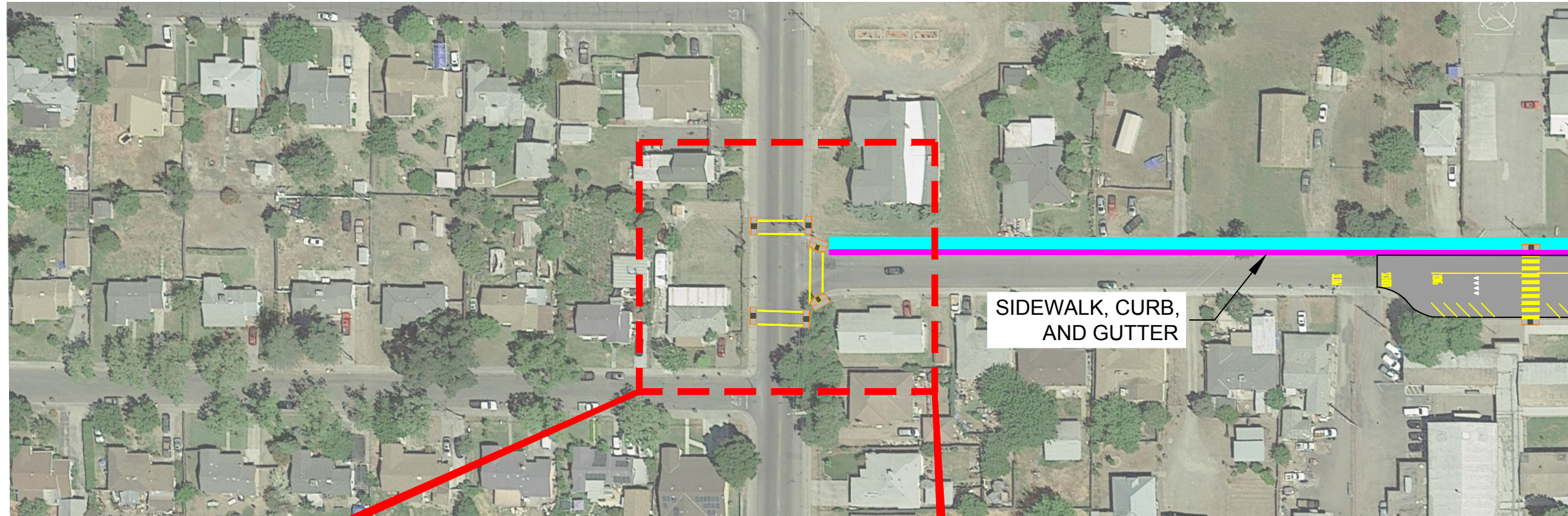
C:\Users\jvanquark\AppData\Local\Temp\Temp_Vanquark\11148 Fillmore-Exhibit.dwg Jul 25, 2018 - 2:39pm jvanquark

FILLMORE ELEMENTARY SCHOOL

ATTACHMENT



PLAN SCALE: 1"=100'
DETAIL SCALE: 1"=30'



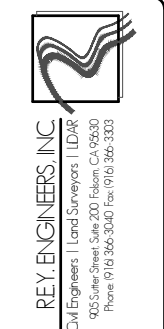
LEGEND

-  5' WIDE SIDEWALK
-  CURB & GUTTER
-  CROSSWALK MARKINGS
-  YIELD MARKINGS
-  PEDESTRIAN CURB RAMP

SEE ATTACHMENT E FOR PHOTOS OF EXISTING CONDITIONS

NO.	REVISION DESCRIPTION	CHECKED BY	DATE

DRAWING SCALE
HOR. SCALE: _____
VERT. SCALE: _____



SRTS: SIDEWALK GAP CLOSURE
FILLMORE ELEMENTARY SCHOOL
ATTACHMENT D
CITY OF STOCKTON
CALIFORNIA

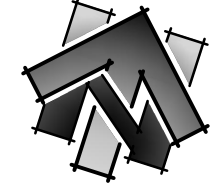
DRAWING INFO
DATE: 7-30-18
DRAFTER: JJE
DESIGNER: JJE
REVIEWER: JJE

PROJECT NO.
1533.003
SHEET NO. **1B**

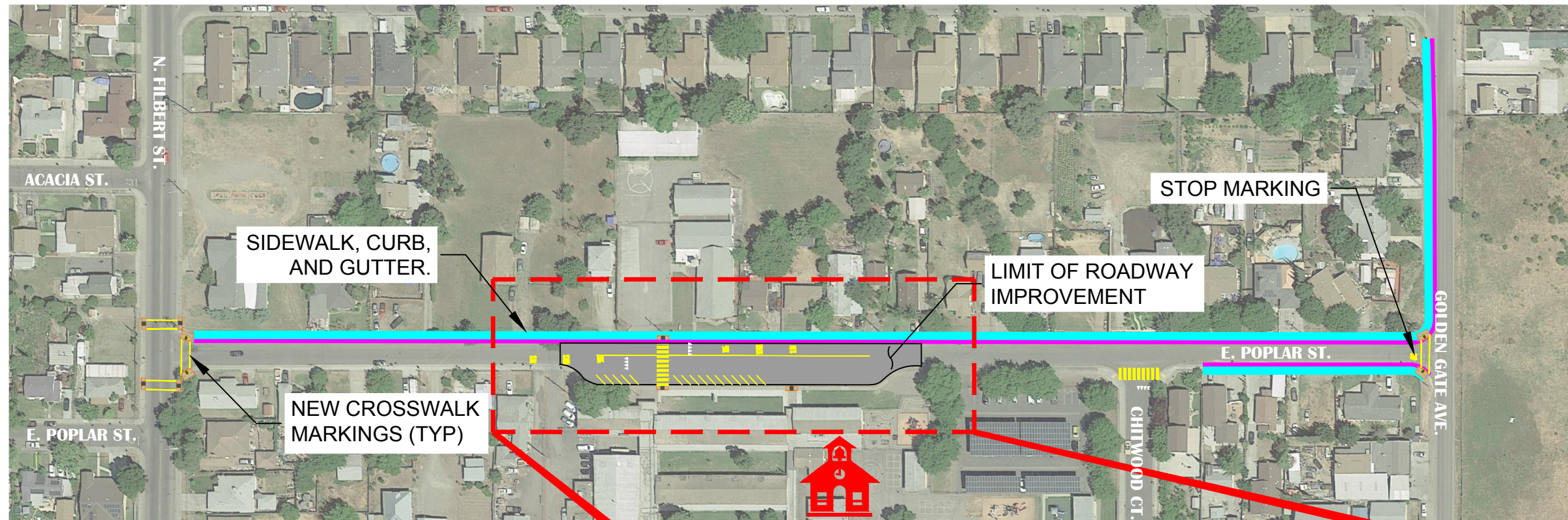
C:\Users\jvanquay\AppData\Local\Temp\Temp_VapPublic\11148\Fillmore-Exhibit.dwg Jul 25, 2018 - 2:39pm jvanquay

FILLMORE ELEMENTARY SCHOOL






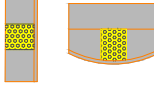


ATTACHMENT



PLAN SCALE: 1"=150'
DETAIL SCALE: 1"=80'

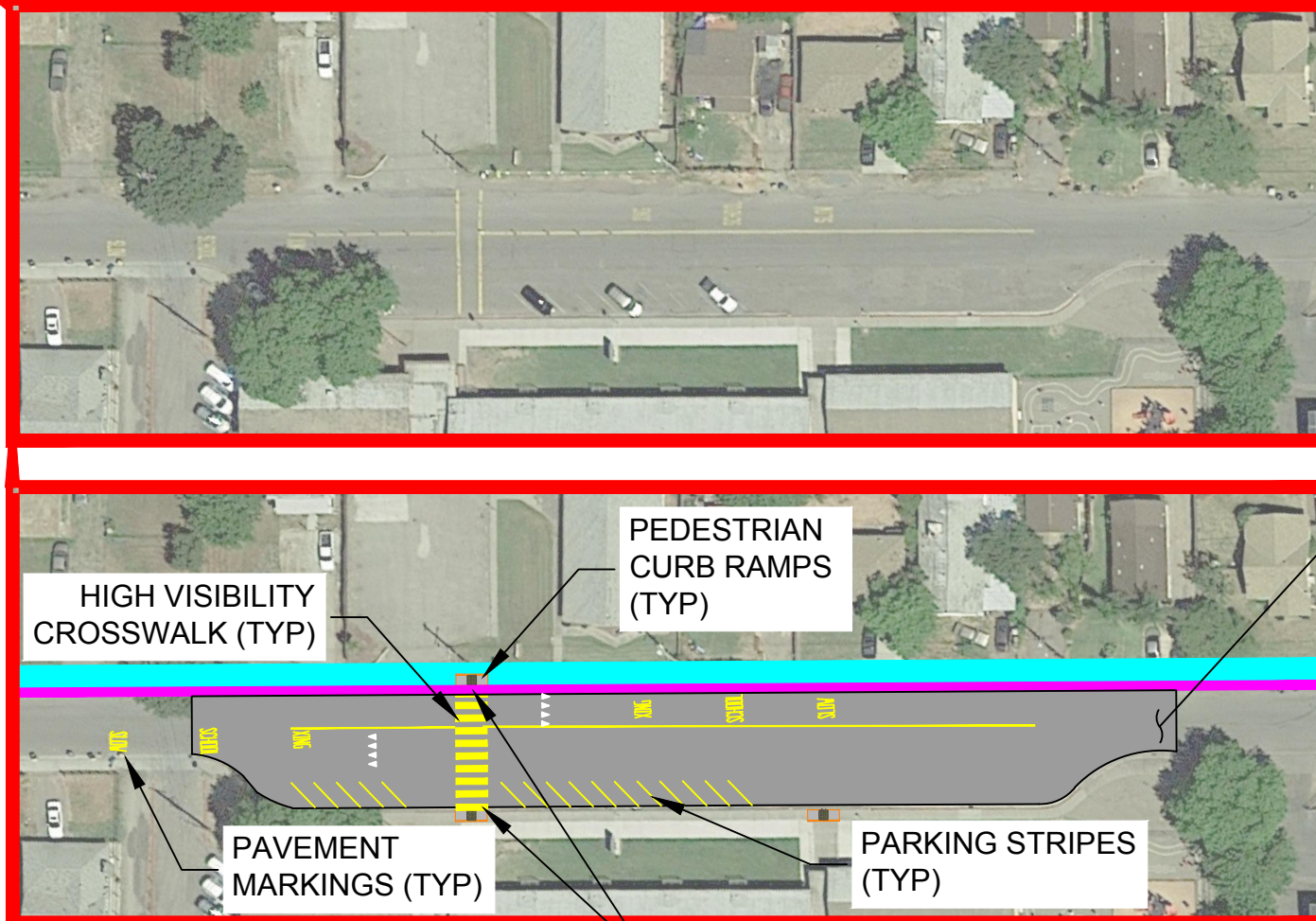


LEGEND

-  FILLMORE ELEMENTARY SCHOOL
-  5' WIDE SIDEWALK
-  CURB & GUTTER
-  CROSSWALK MARKINGS
-  YIELD MARKINGS
-  PEDESTRIAN CURB RAMP
-  ROADWAY IMPROVEMENT LIMIT
-  PAVEMENT MARKINGS

EXISTING

PROPOSED



NEW PAVEMENT. ROADWAY WILL NEED TO BE ADJUSTED BECAUSE OF EXCESSIVE SLOPE AT CROSSWALK

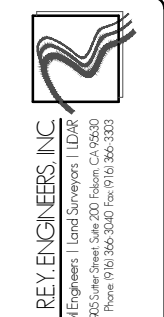
BULB-OUT TO BE EVALUATED DURING DESIGN

R:\1533 Stockton\1533.003 SR5_ATP Cycle 4\10 - CAD Drawings\Attachment D.dwg\Fillmore-Exhibit.dwg Jul 30, 2018 - 2:24pm, ahuan

SEE ATTACHMENT E FOR PHOTOS OF EXISTING CONDITIONS

NO.	REVISION DESCRIPTION	CHECKED BY	DATE

DRAWING SCALE
HOR. SCALE:
VERT. SCALE:



SR5: SIDEWALK GAP CLOSURE
FILLMORE ELEMENTARY SCHOOL
ATTACHMENT D
CITY OF STOCKTON
CALIFORNIA

DRAWING INFO
DATE: 7-30-18
DRAFTER: JG
DESIGNER: JG
REVIEWER: JG

PROJECT NO.
1533.003
SHEET NO. **1C**

VICTORY ELEMENTARY SCHOOL - IMPROVEMENTS OVERVIEW

ATTACHMENT



LEGEND

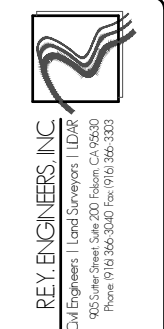
-  VICTORY ELEMENTARY SCHOOL
-  5' WIDE SIDEWALK
-  CURB & GUTTER
-  CROSSWALK MARKINGS
-  YIELD MARKINGS
-  PEDESTRIAN CURB RAMP



PLAN SCALE: 1"=150'

NO.	REVISION - DESCRIPTION	CHECKED BY	DATE

DRAWING SCALE
HOR. SCALE:
VERT. SCALE:



SRTS: SIDEWALK GAP CLOSURE
VICTORY ELEMENTARY SCHOOL
ATTACHMENT D
CITY OF STOCKTON CALIFORNIA

DRAWING INFO	
DATE:	7-30-18
DRAWN BY:	
DESIGNED BY:	
REVIEWED BY:	

PROJECT NO.
1533.003
SHEET NO. **2A**

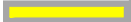


C:\Users\jvanquay\AppData\Local\Temp\Temp_Victory-Exhibit.dwg Jul 25, 2018 - 2:55pm, jvanquay

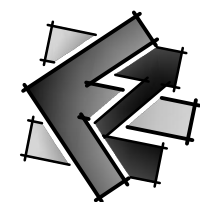
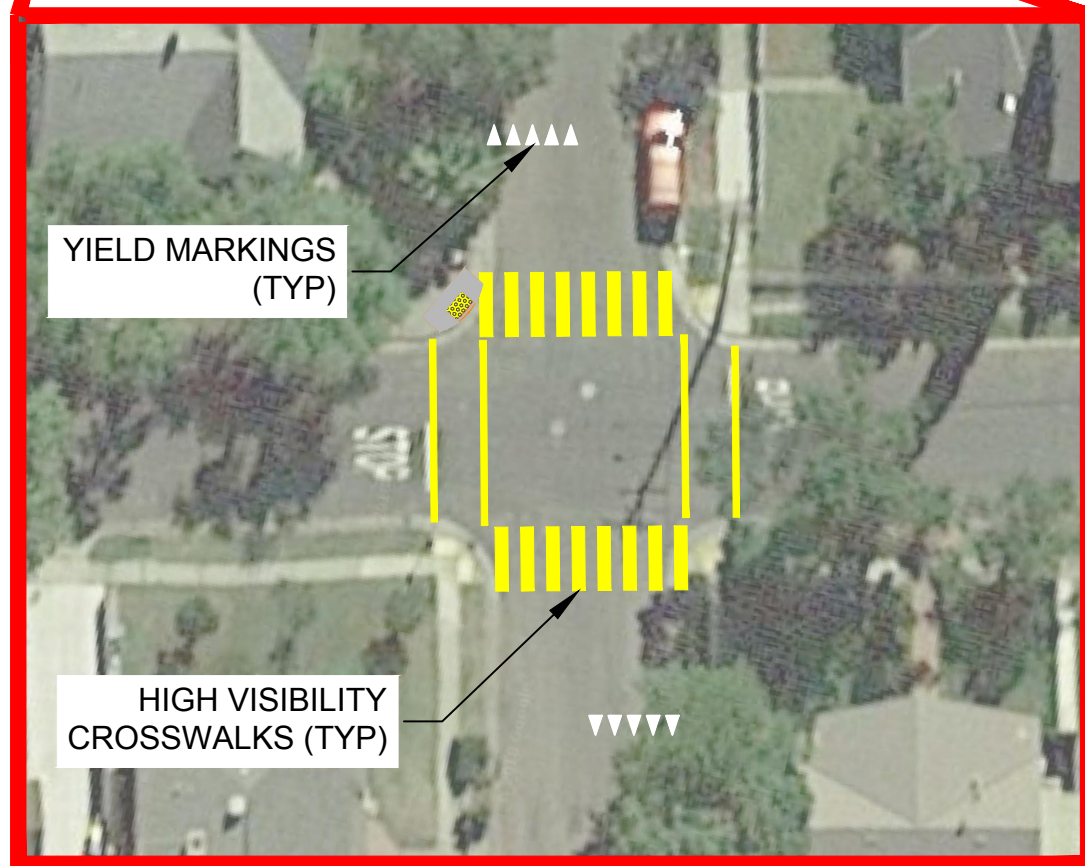
VICTORY ELEMENTARY SCHOOL

ATTACHMENT



LEGEND

-  CROSSWALK MARKINGS
-  YIELD MARKINGS
-  PEDESTRIAN CURB RAMP



PLAN SCALE: 1"=100'
DETAIL SCALE: 1"=30'

SEE ATTACHMENT E FOR PHOTOS OF EXISTING CONDITIONS

CHECKED BY: DAE									
NO. REVISION DESCRIPTION									
DRAWING SCALE HOR. SCALE: VERT. SCALE:									
 CITY OF STOCKTON									
 REV ENGINEERS, INC <small>Civil Engineers Land Surveyors LDAR 925 Sutter Street, Suite 200, Folsom, CA 95630 Phone: (916) 366-3040 Fax: (916) 366-3333</small>									
SRTS: SIDEWALK GAP CLOSURE VICTORY ELEMENTARY SCHOOL ATTACHMENT D CITY OF STOCKTON CALIFORNIA									
DRAWING INFO									
<table style="width: 100%; border: none;"> <tr> <td style="border: none;">DATE:</td> <td style="border: none;">7-30-18</td> </tr> <tr> <td style="border: none;">DRAFTER:</td> <td style="border: none;">[Signature]</td> </tr> <tr> <td style="border: none;">DESIGNER:</td> <td style="border: none;">[Signature]</td> </tr> <tr> <td style="border: none;">REVIEWER:</td> <td style="border: none;">[Signature]</td> </tr> </table>		DATE:	7-30-18	DRAFTER:	[Signature]	DESIGNER:	[Signature]	REVIEWER:	[Signature]
DATE:	7-30-18								
DRAFTER:	[Signature]								
DESIGNER:	[Signature]								
REVIEWER:	[Signature]								
PROJECT NO. 1533.003									
SHEET NO. 2B									

R:\1533 Stockton\1533.003 SRTS ATP Cycle 4\10 - CAD Drawings\Attachment D.dwg\Victory-Exhibit.dwg Jul 27, 2018 - 2:52pm vmmgrw

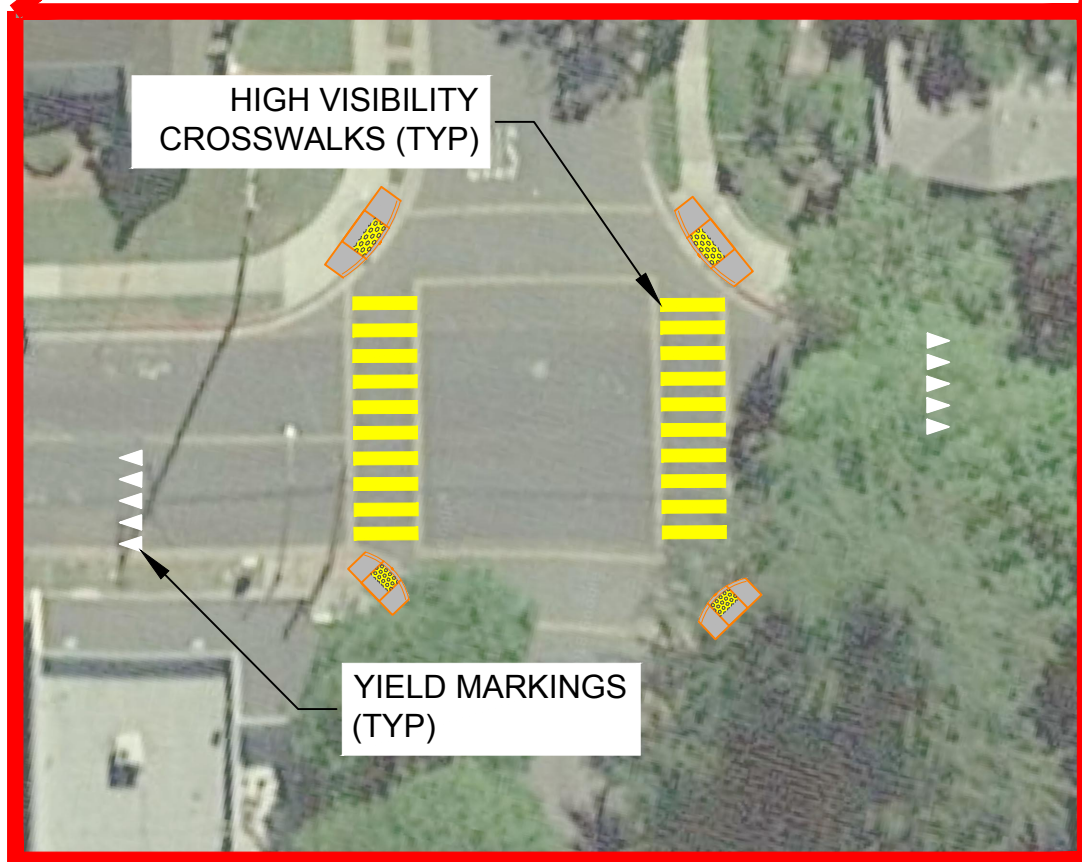
VICTORY ELEMENTARY SCHOOL

ATTACHMENT

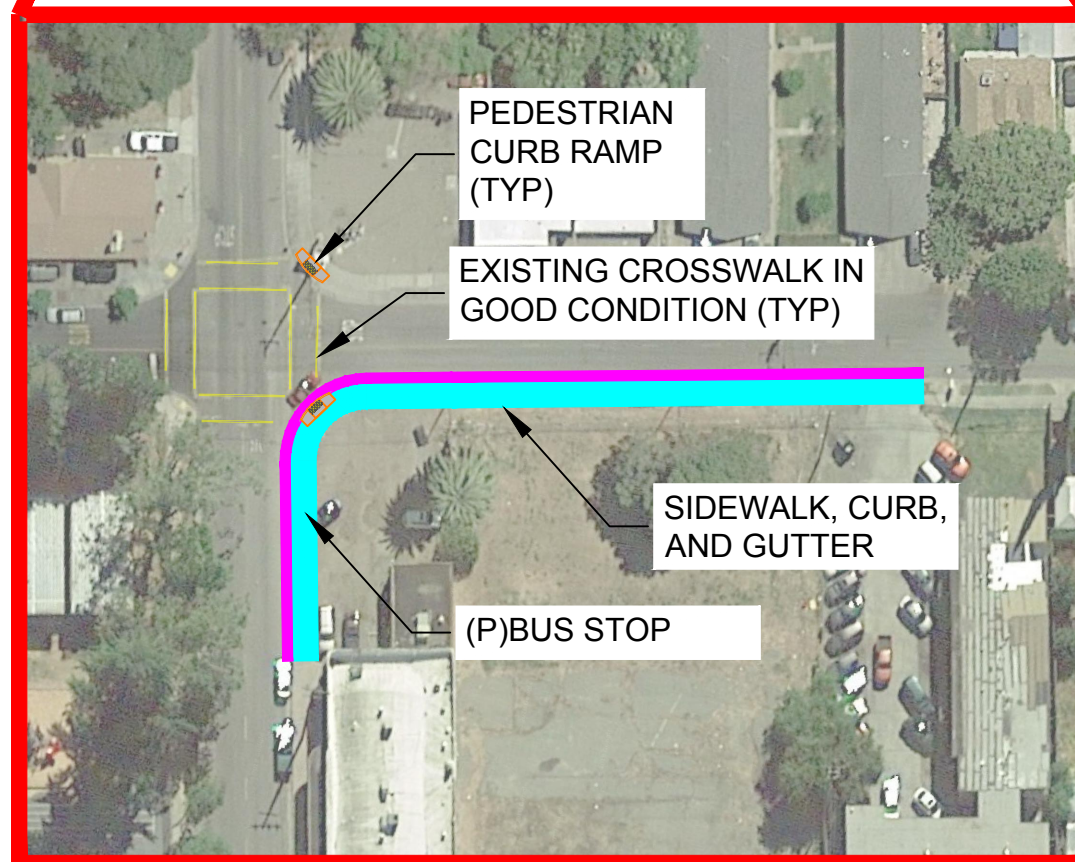


LEGEND

-  VICTORY ELEMENTARY SCHOOL
-  5' WIDE SIDEWALK
-  CURB & GUTTER
-  CROSSWALK MARKINGS
-  YIELD MARKINGS
-  PEDESTRIAN CURB RAMP





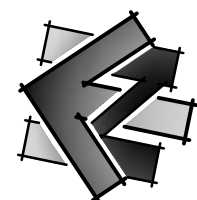
DETAIL SCALE: 1"=30'



DETAIL SCALE: 1"=75'

NOTES:

-  (E)BUS STOP HAS NO PEDESTRIAN AMENITIES.
-  (P)BUS STOP WILL BE EVALUATED DURING DESIGN TO PROVIDE GREATER ACCESS TO STUDENTS. (I.E. SHELTER, BENCH, SIGNAGE). CITY COORDINATE WITH SAN JOAQUIN REGIONAL TRANSIT DISTRICT.



PLAN SCALE: 1"=125'

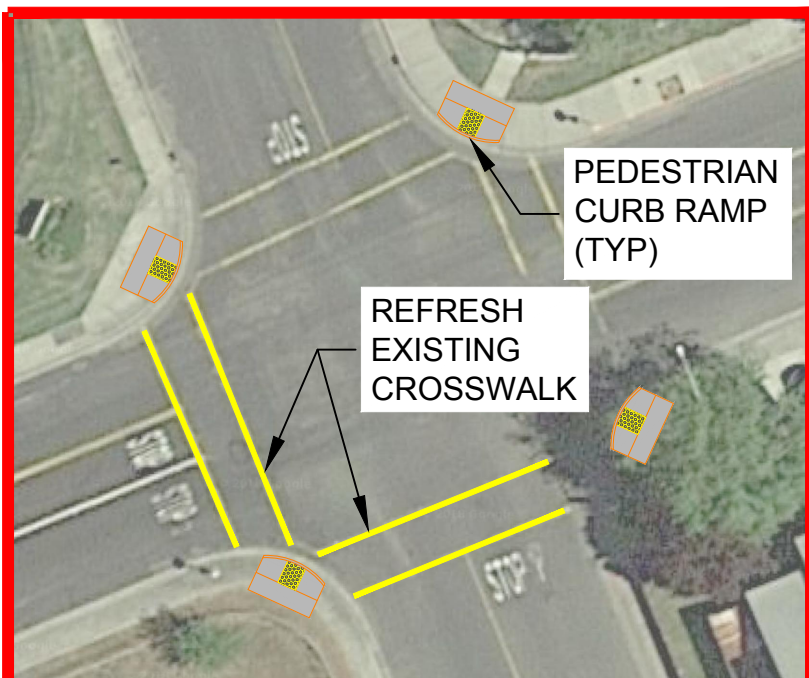
SEE ATTACHMENT E FOR PHOTOS OF EXISTING CONDITIONS

CHECKED BY: DAE	
NO. REVISION DESCRIPTION	
DRAWING SCALE	
HOR. SCALE:	
VERT. SCALE:	
	
	
<small>REV ENGINEERS, INC Civil Engineers Land Surveyors LDRS 925 Sutter Street, Suite 200, Folsom, CA 95630 Phone: (916) 366-3040 Fax: (916) 366-3333</small>	
SRTS: SIDEWALK GAP CLOSURE VICTORY ELEMENTARY SCHOOL ATTACHMENT D	CALIFORNIA CITY OF STOCKTON
DRAWING INFO	
DATE:	7-30-18
DRAWN BY:	DAE
DESIGNED BY:	DAE
REVIEWED BY:	DAE
PROJECT NO. 1533.003	
SHEET NO. 2C	

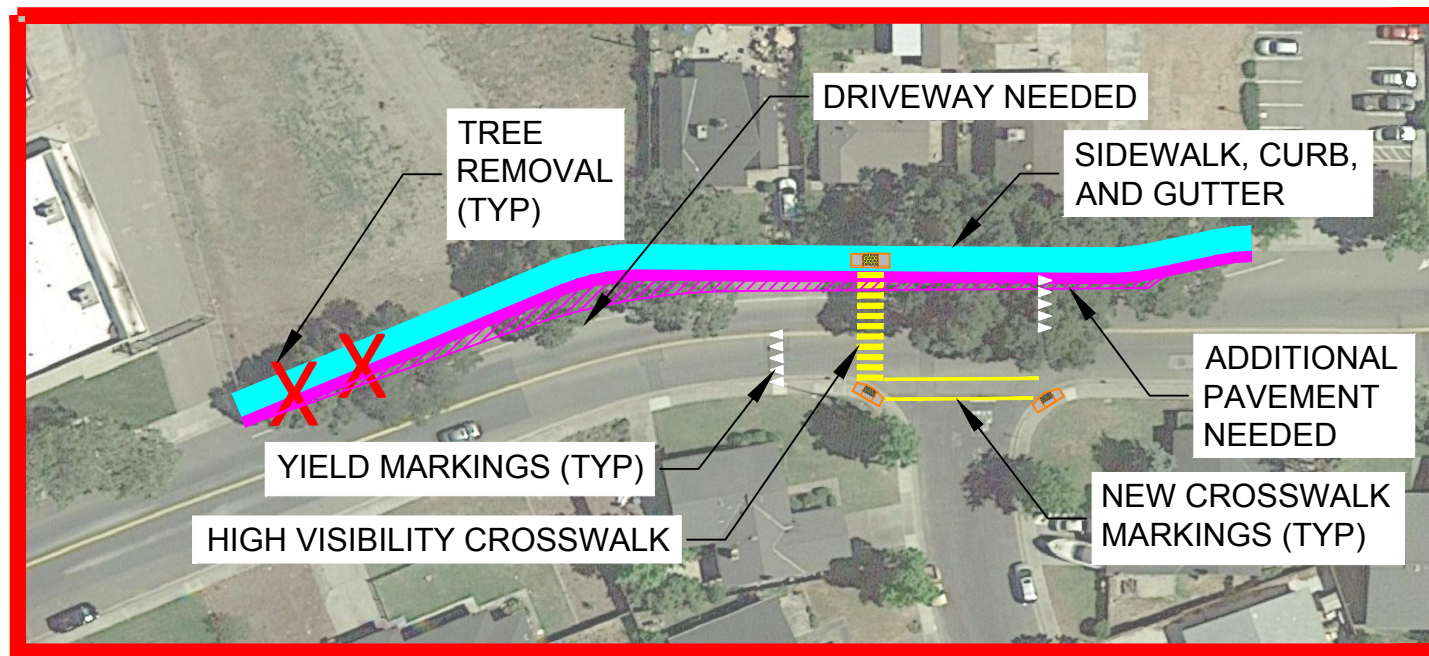
R:\1533 Stockton\1533.003 SRTS_ATP Cycle 4\10 - CAD Drawings\Attachment D.dwg\Victory-Exhibit.dwg Jul 30, 2018 - 2:25pm. ehuan

DELTA SIERRA MIDDLE SCHOOL

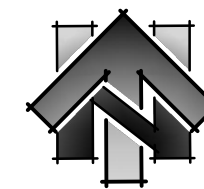
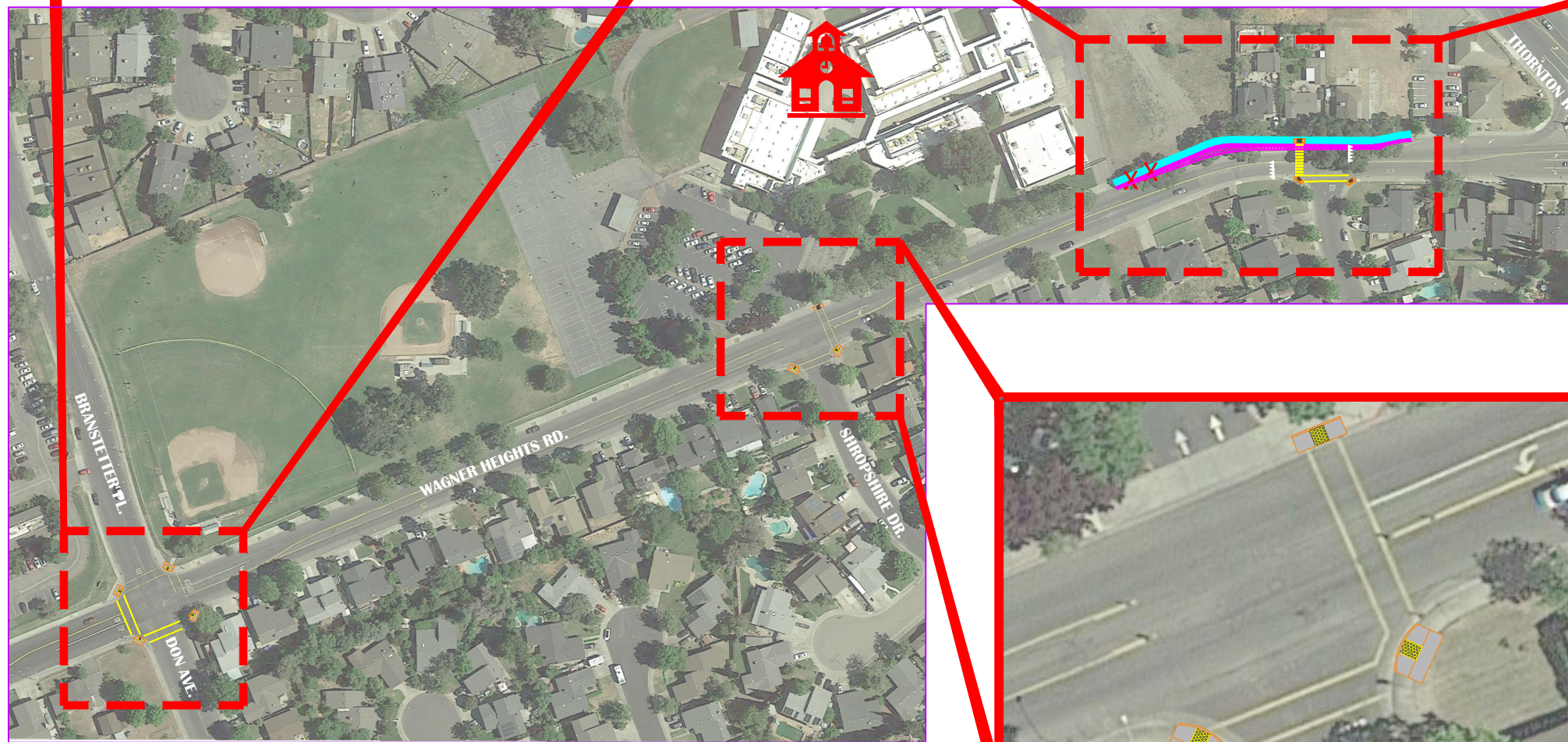
ATTACHMENT D



DETAIL SCALE: 1"=40'



DETAIL SCALE: 1"=75'



PLAN SCALE: 1"=200'

LEGEND

- DELTA SIERRA MIDDLE SCHOOL
- 5' WIDE SIDEWALK
- CURB & GUTTER
- CROSSWALK MARKINGS
- TREE REMOVAL
- PEDESTRIAN CURB RAMPS
- YIELD MARKINGS
- ADDITIONAL PAVEMENT NEEDED

SEE ATTACHMENT E FOR PHOTOS OF EXISTING CONDITIONS

DETAIL SCALE: 1"=40'

CHECKED BY:	DATE:
NO. REVISION	DESCRIPTION
DRAWING SCALE	
HOR. SCALE:	
VERT. SCALE:	
CITY OF STOCKTON	
REY ENGINEERS, INC. Civil Engineers Land Surveyors LDAR 995 Sutter Street, Suite 200, Folsom, CA 95630 Phone: (916) 366-3040 Fax: (916) 366-3333	
SRTS: SIDEWALK GAP CLOSURE DELTA SIERRA MIDDLE SCHOOL ATTACHMENT D	
CITY OF STOCKTON CALIFORNIA	
DRAWING INFO	
DATE:	7/30/18
DRAFTER:	DL
DESIGNER:	DL
REVIEWER:	DL
PROJECT NO.	
1533.003	
SHEET NO. 3	

R:\1533_Stockton\1533.003_SRTS_ATP_Cycle_A\10 - CAD Drawings\Attachment D - City of Delta Sierra - Exhibits.dwg Jul 25, 2018 - 2:16pm, jaraquez

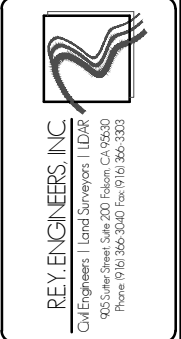
MONTEZUMA ELEMENTARY SCHOOL - IMPROVEMENTS OVERVIEW



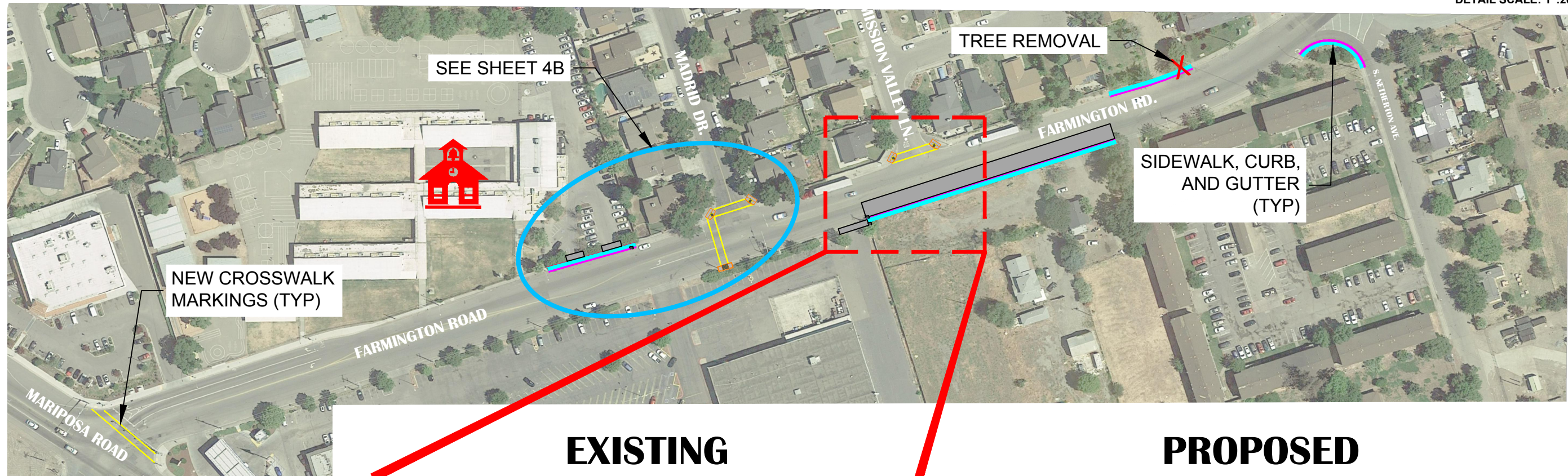
PLAN SCALE: 1"=150'
DETAIL SCALE: 1"=20'

CHECKED BY:	DATE:
NO. REVISION	DESCRIPTION

DRAWING SCALE
HOR. SCALE:
VERT. SCALE:

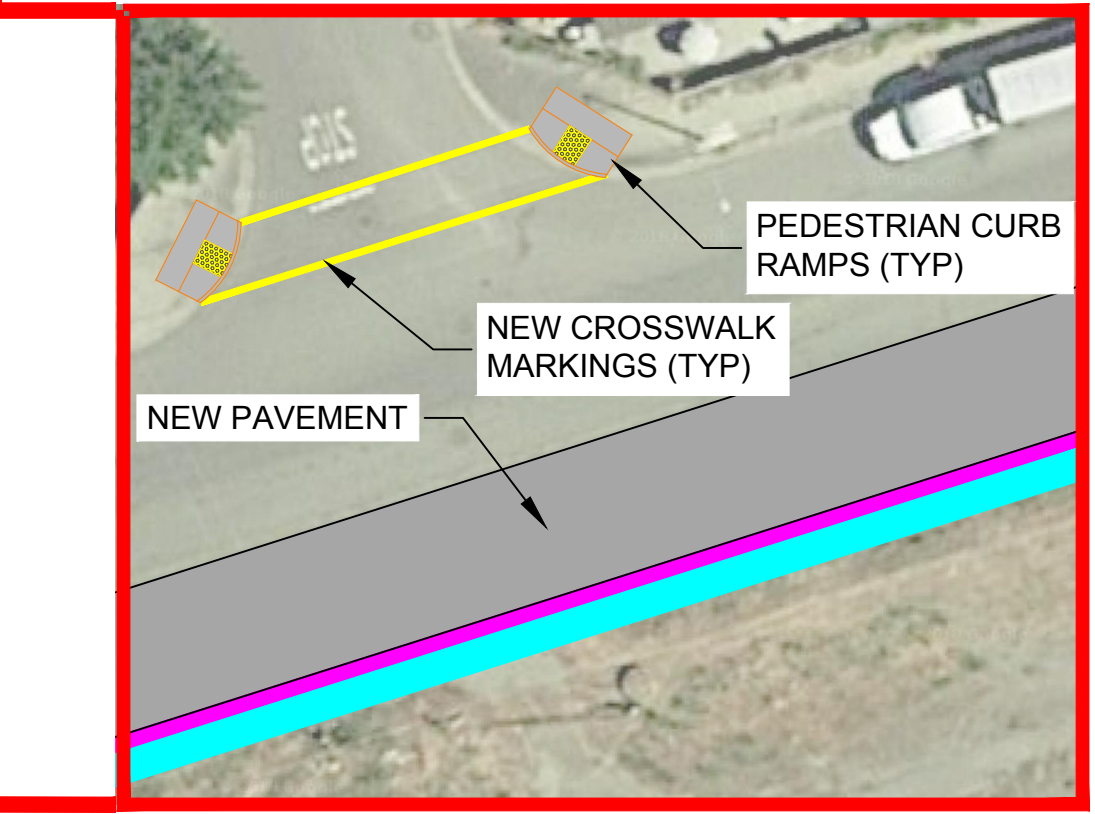


SRTS: SIDEWALK GAP CLOSURE
MONTEZUMA ELEMENTARY SCHOOL
 ATTACHMENT D
 CITY OF STOCKTON
 CALIFORNIA



LEGEND

- MONTEZUMA ELEMENTARY SCHOOL
- 5' WIDE SIDEWALK
- CURB & GUTTER
- CROSSWALK MARKINGS
- PEDESTRIAN CURB RAMP
- TREE REMOVAL
- NEW PAVEMENT



SEE ATTACHMENT E FOR PHOTOS OF EXISTING CONDITIONS

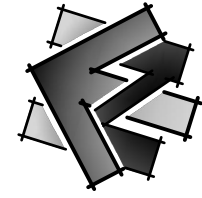
R:\1533 Stockton\1533.003 SRTS_ATP_Cycle_4\10 - CAD Drawings\Attachment D.dwg\Montezuma-Exhibit.dwg Jul 25, 2018 - 3:59pm, vgmopw

DRAWING INFO	
DATE:	7-31-18
DRAFTER:	
DESIGNER:	
REVIEWER:	

PROJECT NO.
1533.003
SHEET NO. **4A**

MONTEZUMA ELEMENTARY SCHOOL

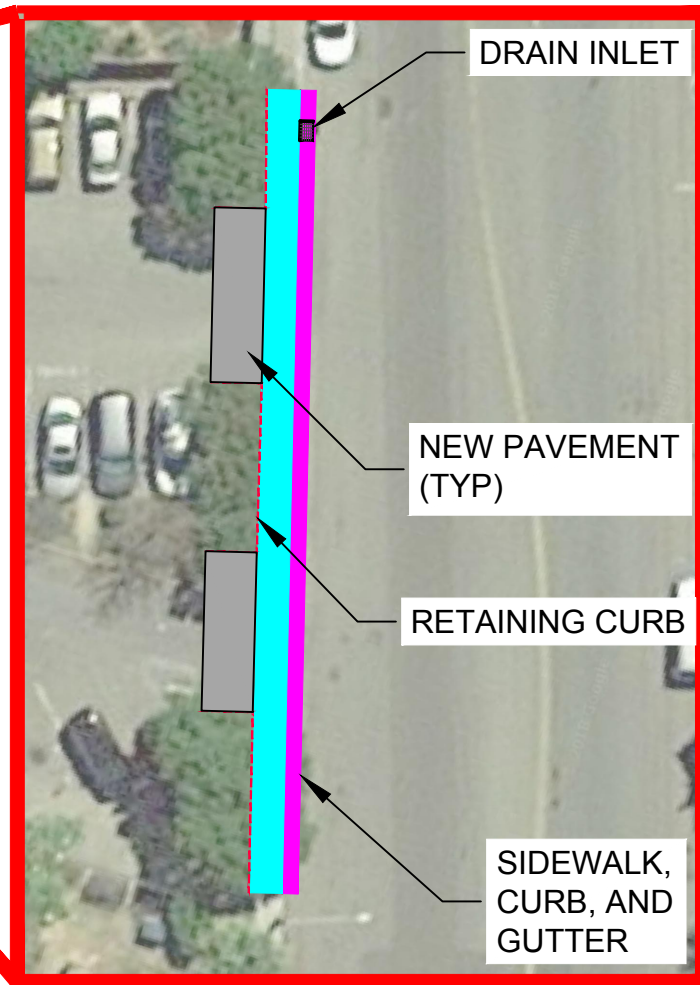
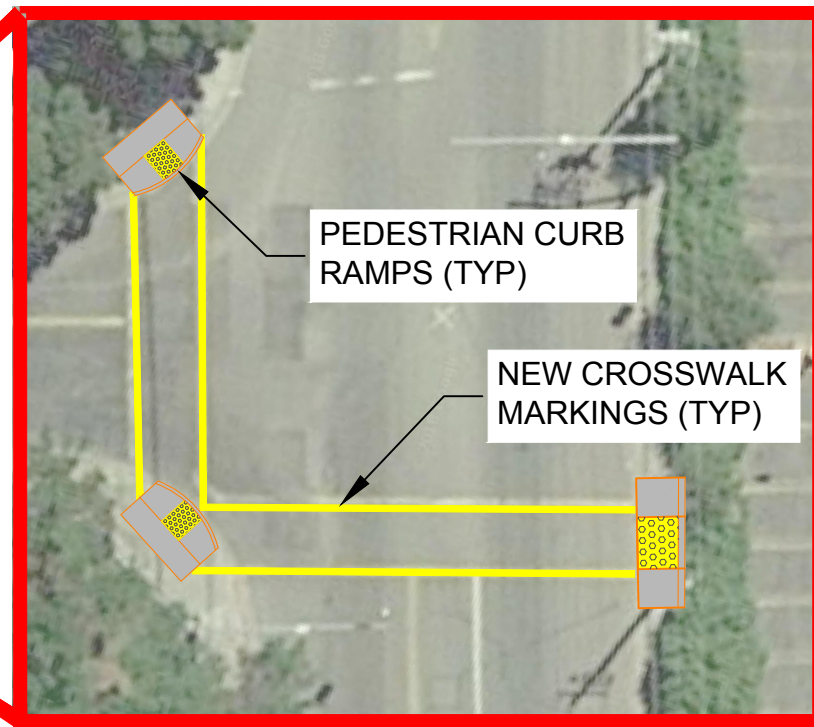
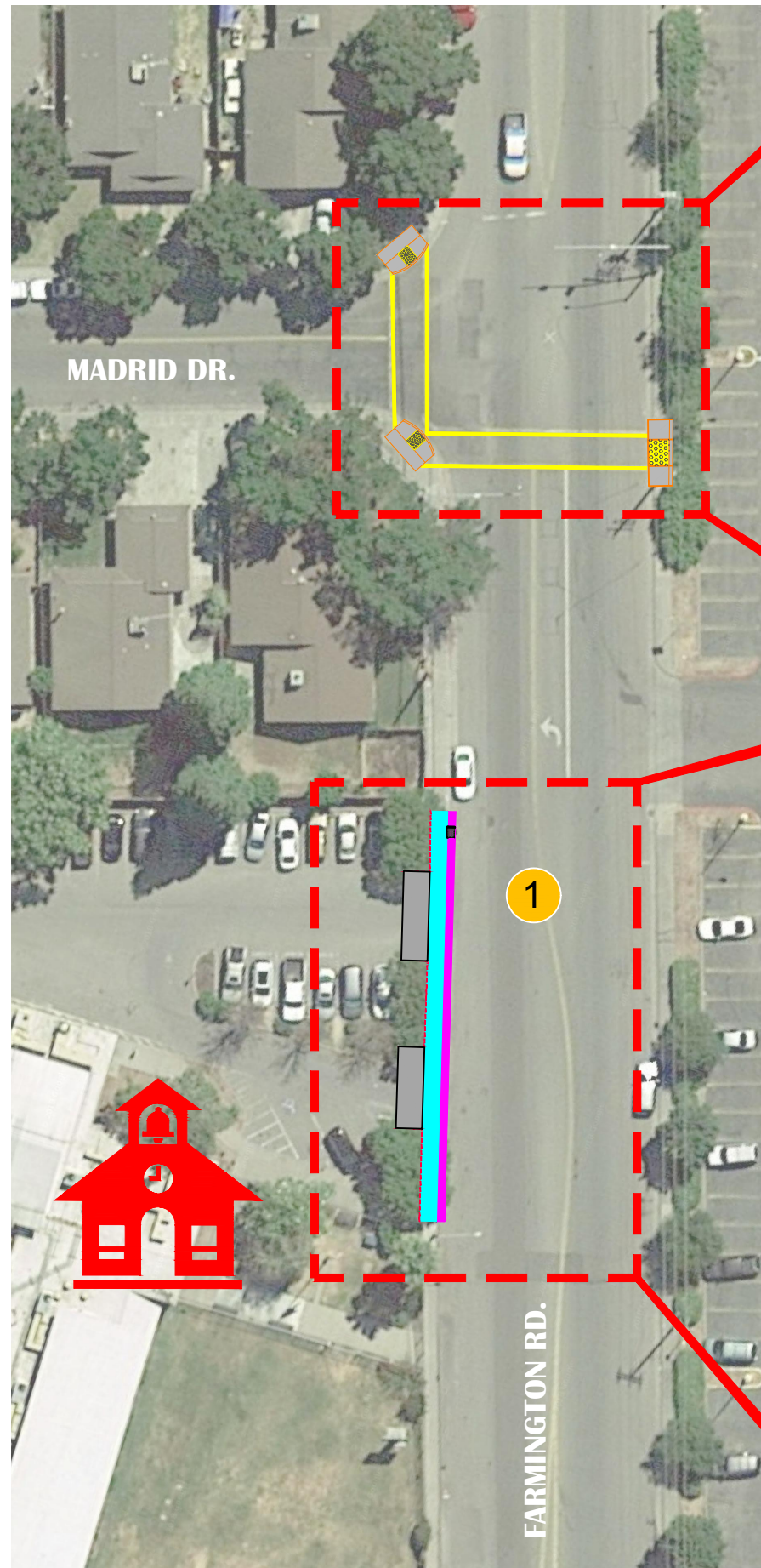
ATTACHMENT



PLAN SCALE: 1"=50'
DETAIL SCALE: 1"=30'

LEGEND

- MONTEZUMA ELEMENTARY SCHOOL
- 5' WIDE SIDEWALK
- CURB & GUTTER
- CROSSWALK MARKINGS
- PEDESTRIAN CURB RAMP
- DRAIN INLET (SCALED FOR CLARITY)
- NEW PAVEMENT
- REMOVE / REPLACE RETAINING CURB



1 PHOTO 1: EXISTING CONDITIONS LOOKING WEST



SEE ATTACHMENT E FOR PHOTOS OF EXISTING CONDITIONS

NO.	REVISION DESCRIPTION	CHECKED BY	DATE

DRAWING SCALE	
HOR. SCALE:	
VERT. SCALE:	



SRTS: SIDEWALK GAP CLOSURE
MONTEZUMA ELEMENTARY SCHOOL
 ATTACHMENT D
 CITY OF STOCKTON
 CALIFORNIA

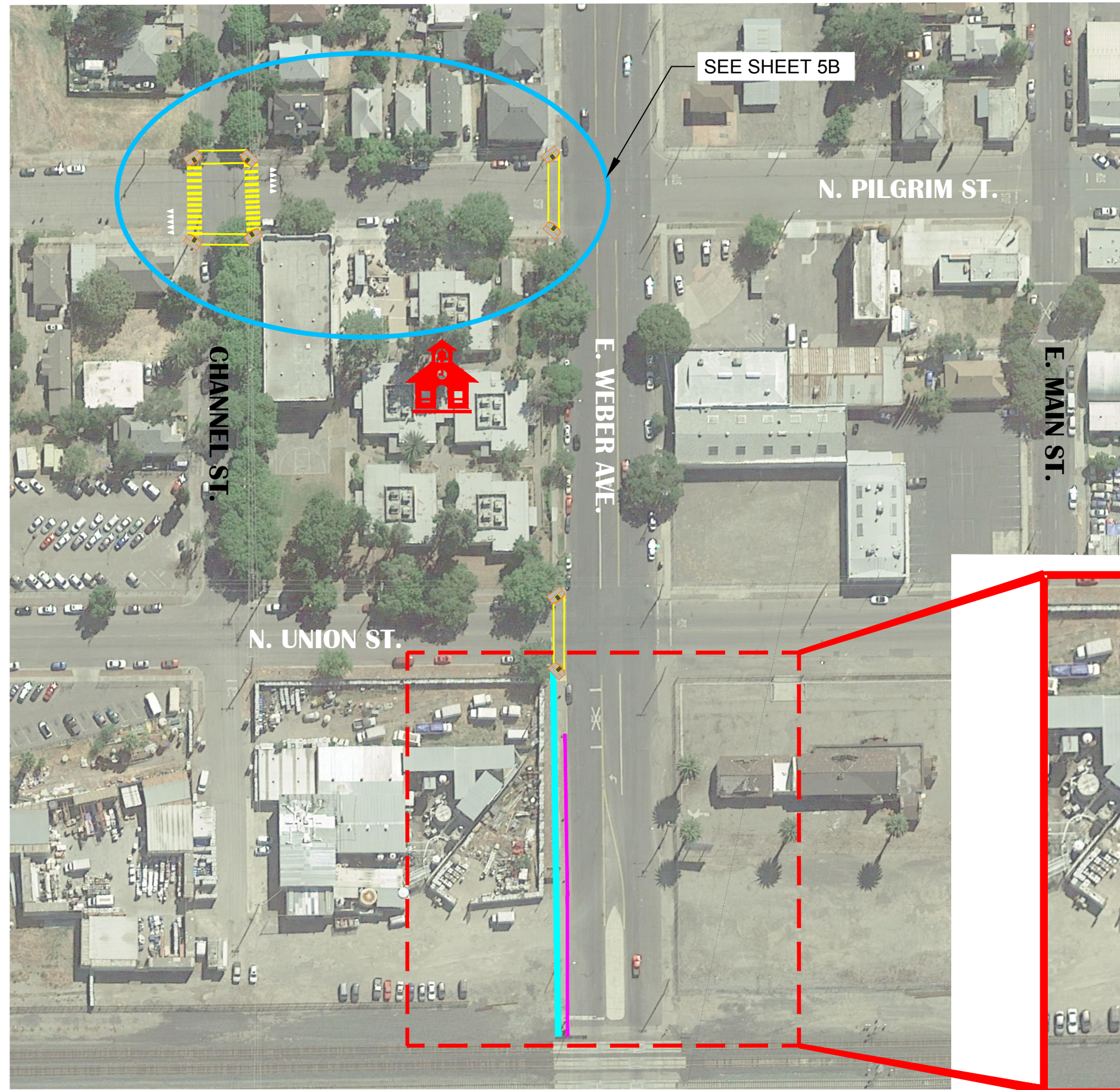
DRAWING INFO	
DATE:	7-30-18
DRAFTER:	
DESIGNER:	
REVIEWER:	

PROJECT NO.
1533.003
SHEET NO. **4B**

C:\Users\lvazquez\AppData\Local\Temp\Temp_Vazquez\11148_Montezuma-Exhibit.dwg Jul 25, 2018 - 2:29pm - lvazquez

JANE FREDERICK HIGH SCHOOL - IMPROVEMENTS OVERVIEW

ATTACHMENT
 PLAN SCALE: 1"=100'



LEGEND

-  JANE FREDERICK HIGH SCHOOL
-  5' WIDE SIDEWALK
-  CURB & GUTTER
-  CROSSWALK MARKINGS
-  PEDESTRIAN CURB RAMP
-  YIELD MARKINGS



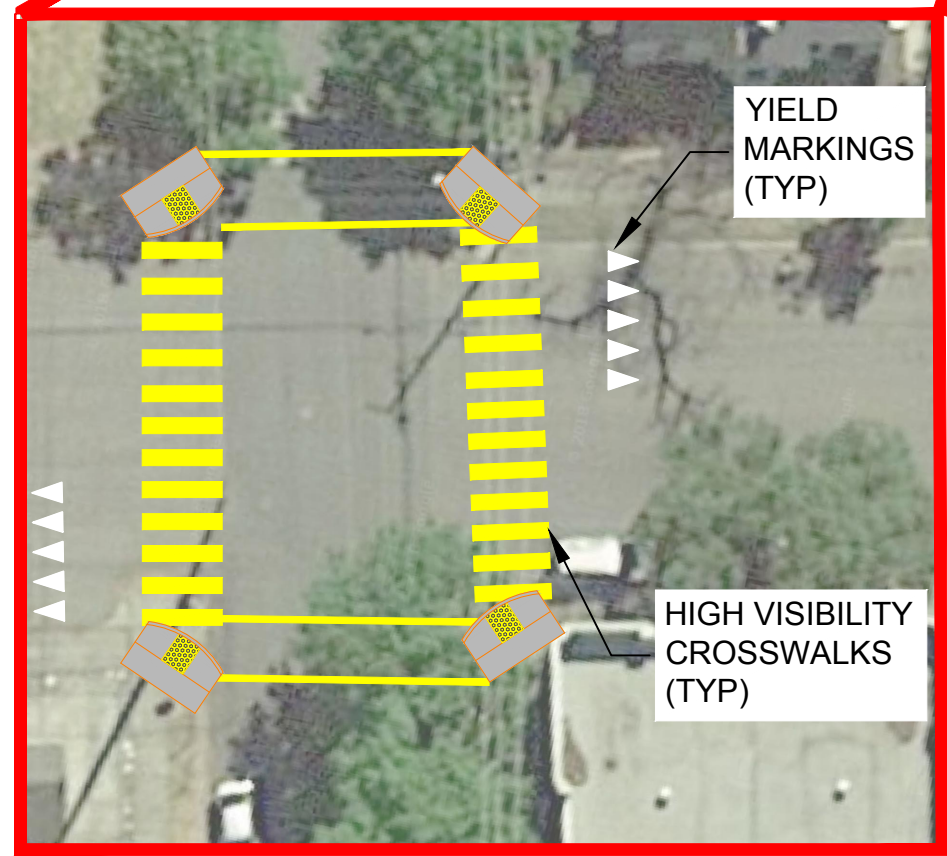
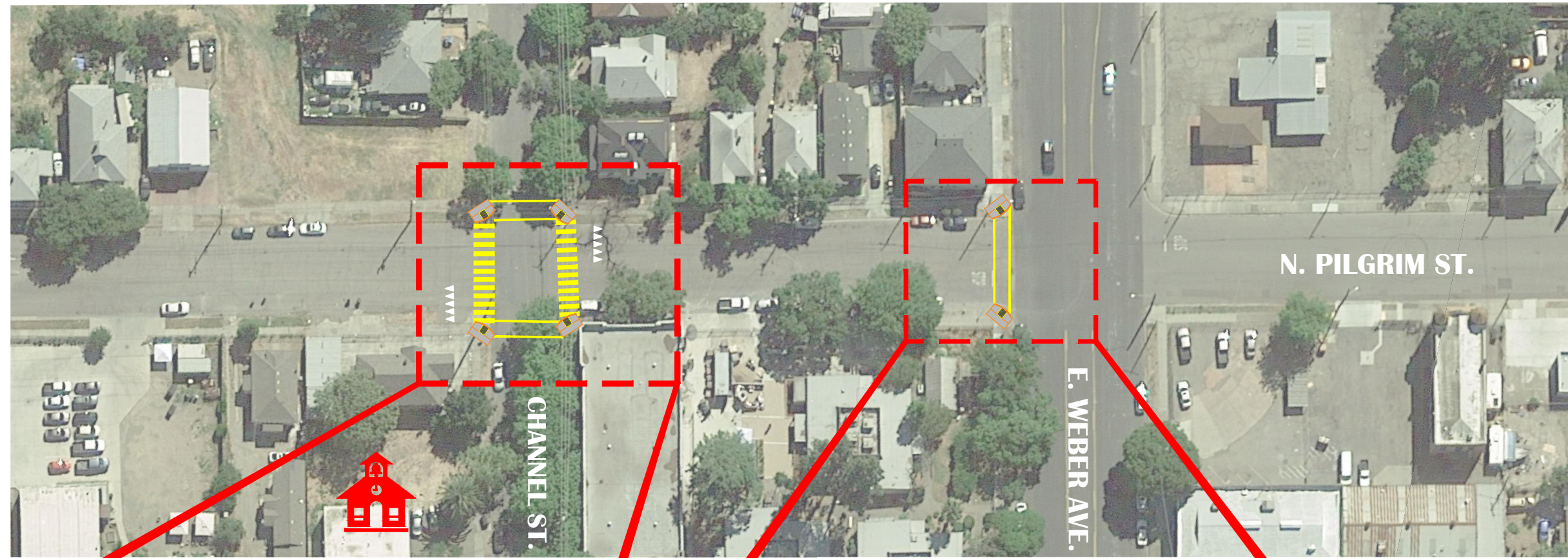
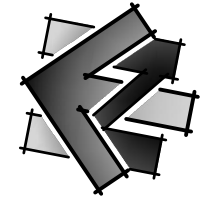
DETAIL SCALE: 1"=75'

R:\1533 Stockton\1533.003 SRS_ATP Cycle 1.10 - CAD Drawings\Attachment D.dwg\Jane Frederick-Exhibit.dwg Jul 30, 2018 - 2:26pm, ehun

CHECKED BY: DAE	
NO. REVISION DESCRIPTION	
DRAWING SCALE HOR. SCALE: VERT. SCALE:	
 CITY OF STOCKTON	
 REV ENGINEERS, INC Civil Engineers Land Surveyors LDAR 925 Sutter Street, Suite 200, Folsom, CA 95630 Phone: (916) 366-3040 Fax: (916) 366-3333	
SRTS: SIDEWALK GAP CLOSURE JANE FREDERICK HIGH SCHOOL ATTACHMENT D	
CITY OF STOCKTON CALIFORNIA	
DRAWING INFO	
DATE: 7-30-18	
DRAFTER: JAE	
DESIGNER: JAE	
REVIEWER: JAE	
PROJECT NO. 1533.003	
SHEET NO. 5A	

JANE FREDERICK HIGH SCHOOL

ATTACHMENT



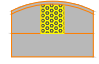



DETAIL SCALE: 1"=30'



DETAIL SCALE: 1"=20'

LEGEND

-  JANE FREDERICK HIGH SCHOOL
-  CROSSWALK MARKINGS
-  PEDESTRIAN CURB RAMP
-  YIELD MARKINGS

SEE ATTACHMENT E FOR PHOTOS OF EXISTING CONDITIONS

NO.	REVISION DESCRIPTION	CHECKED BY	DATE

DRAWING SCALE	
HOR. SCALE:	
VERT. SCALE:	



SRTS: SIDEWALK GAP CLOSURE
JANE FREDERICK HIGH SCHOOL
ATTACHMENT D

CITY OF STOCKTON CALIFORNIA

DRAWING INFO	
DATE:	7-30-18
DRAFTER:	
DESIGNER:	
REVIEWER:	

PROJECT NO.	1533.003
SHEET NO.	5B

C:\Users\vwang\AppData\Local\Temp\Temp_VisPublic\11148\Jane Frederick-Exhibit.dwg Jul 26, 2018 - 2:25pm, vwanqz